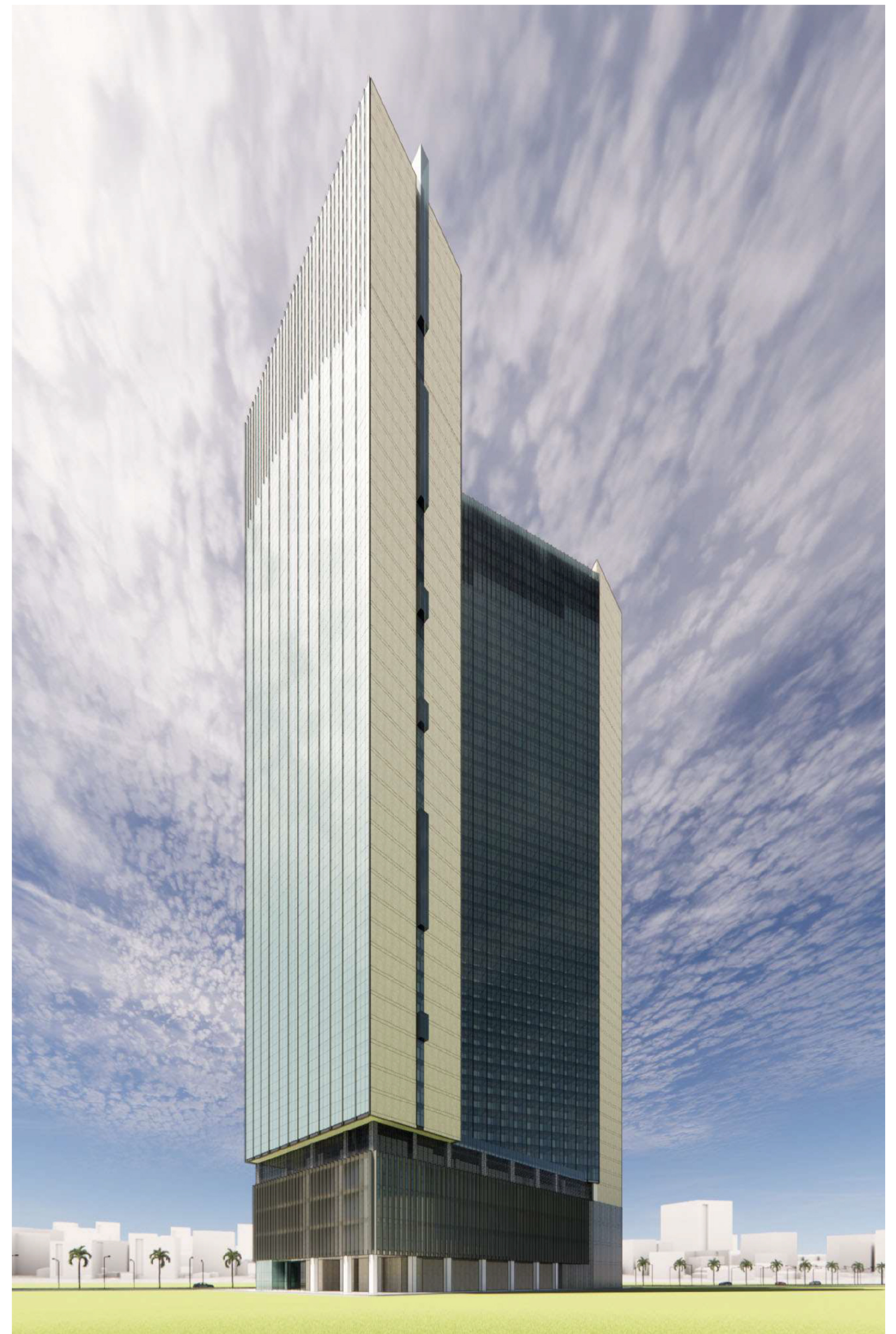
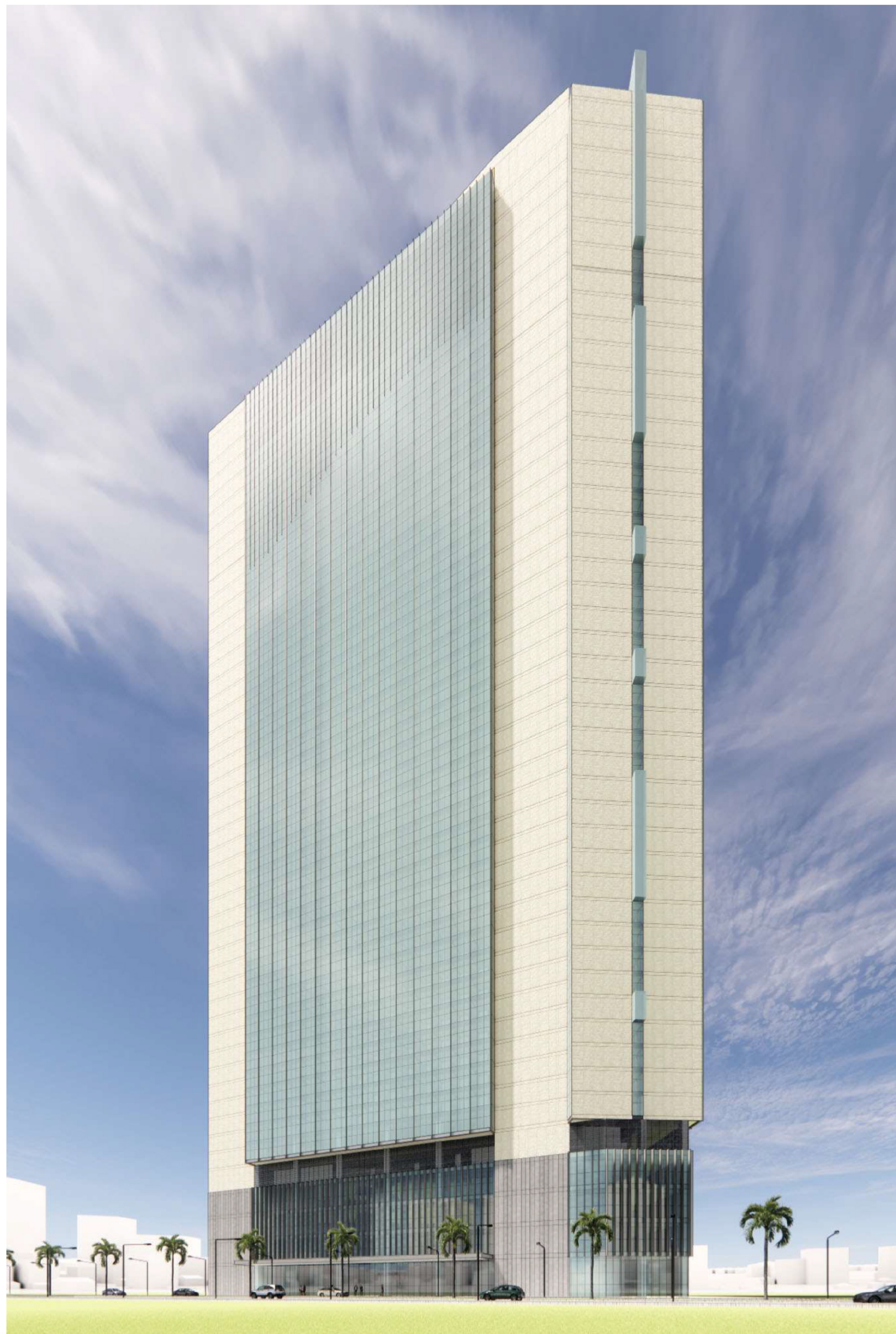


# 11

HYDERABAD ONE









# Property is located amidst high density IT/ITES office space cluster



CA Technologies

Wipro Campus

Subject Property

ICICI

Capgemini

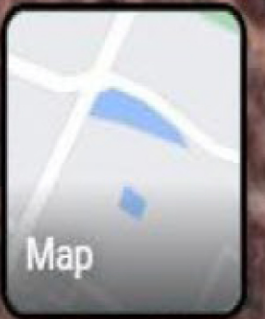
Cognizant Technologies

Cyent Technologies

Amazon Development Center

Amazon India

Honeywell India





# SITE PARAMETERS

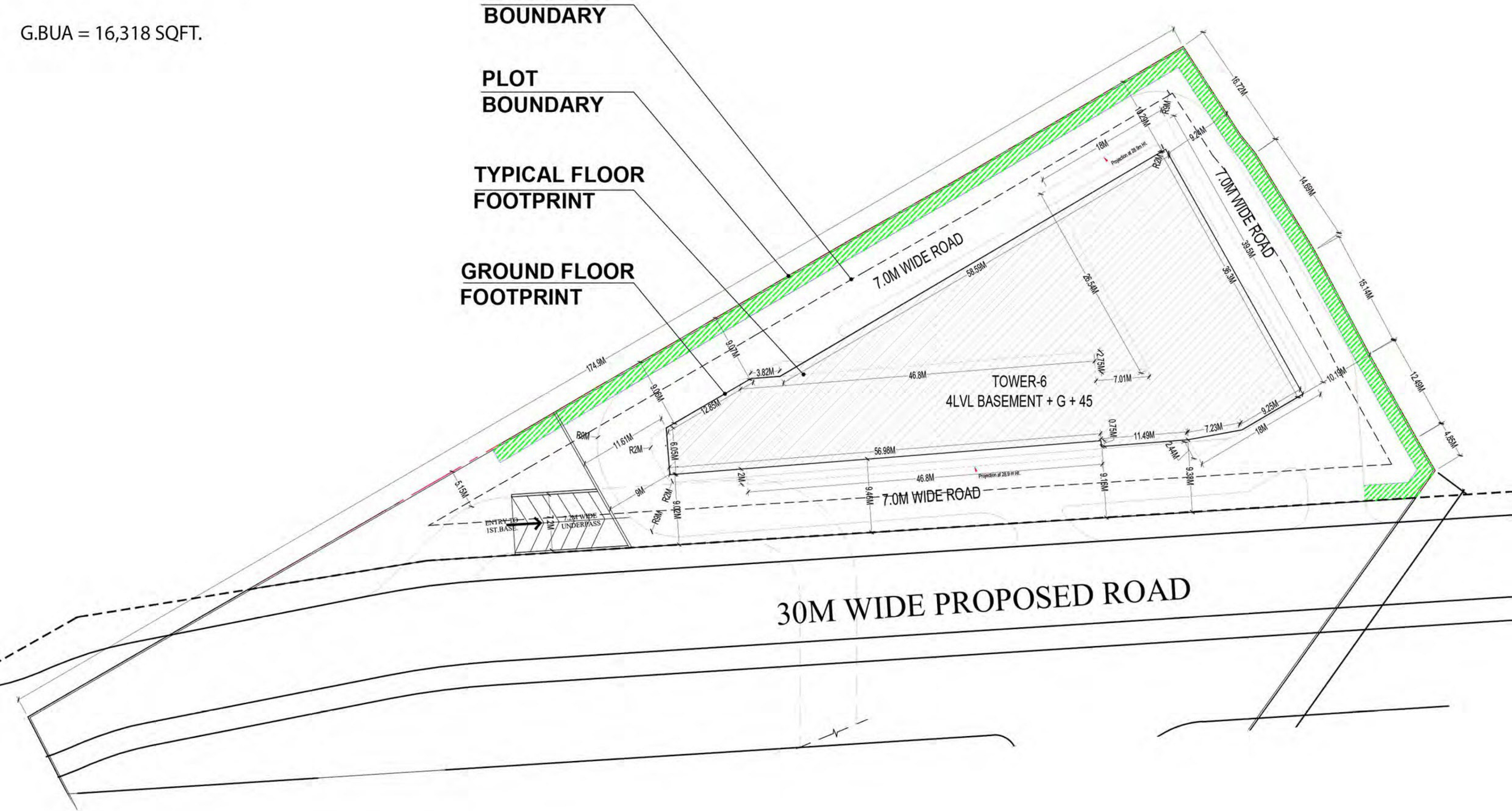
G.BUA = 16,318 SQFT.

**BASEMENT  
BOUNDARY**

**PLOT  
BOUNDARY**

**TYPICAL FLOOR  
FOOTPRINT**

**GROUND FLOOR  
FOOTPRINT**





# GROUND FLOOR PLAN





# TYPICAL FLOOR PLAN

G.BUA = 16,318SQFT.

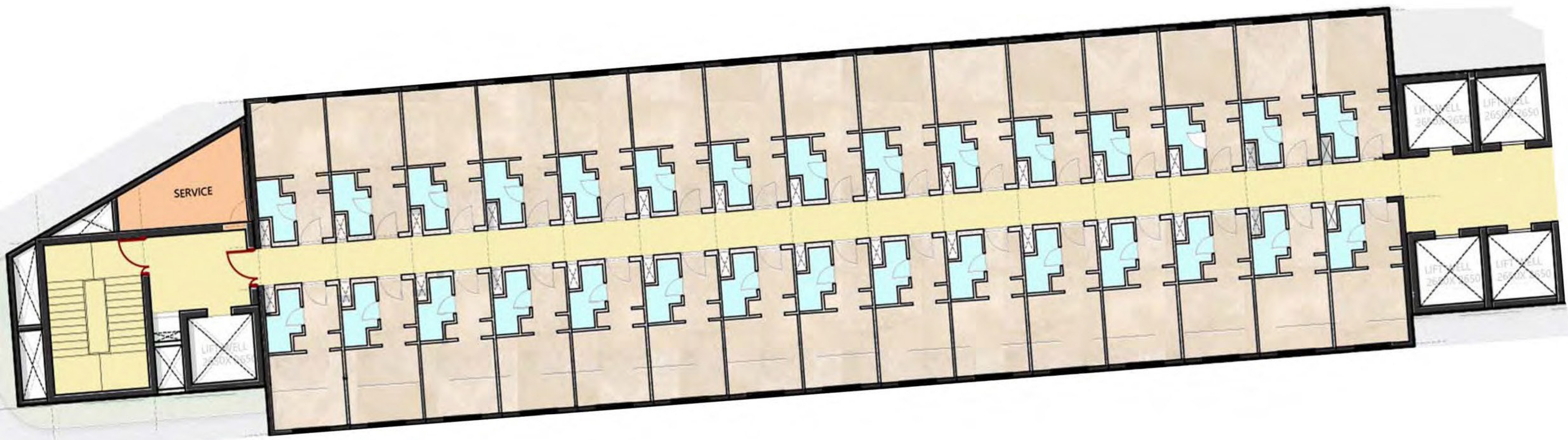
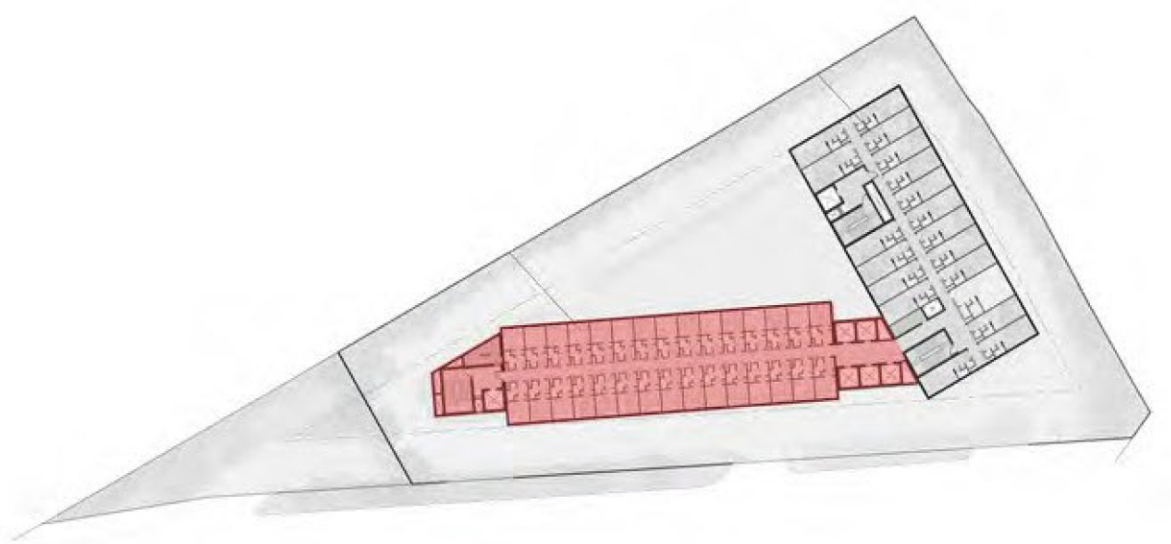
ROOM 2  
22.80 SQM

ROOM 1  
16.25 SQM



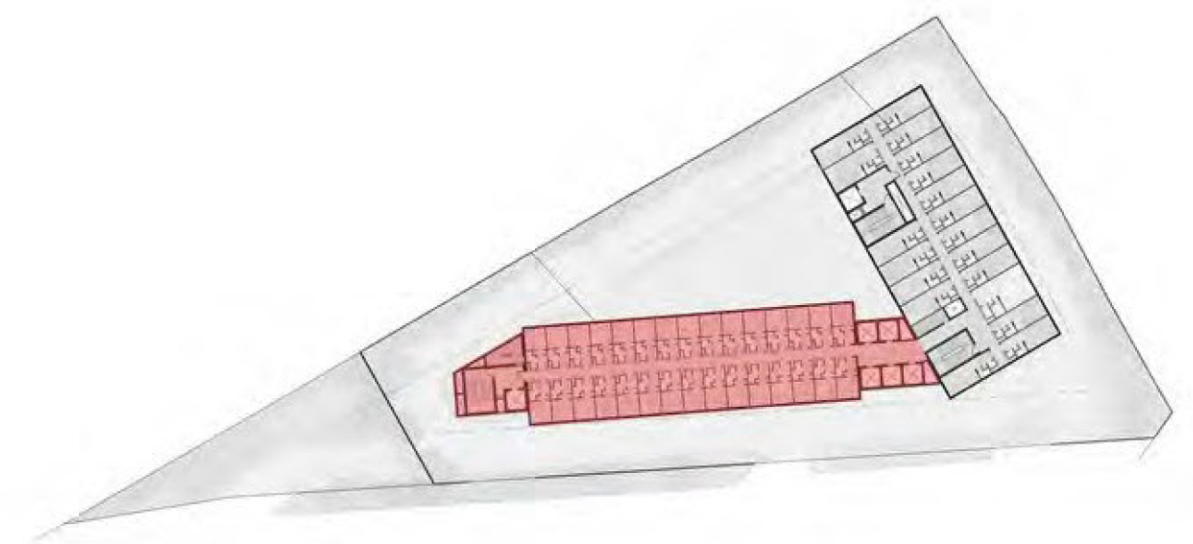


TYPICAL FLOOR PLAN  
SOUTH WING





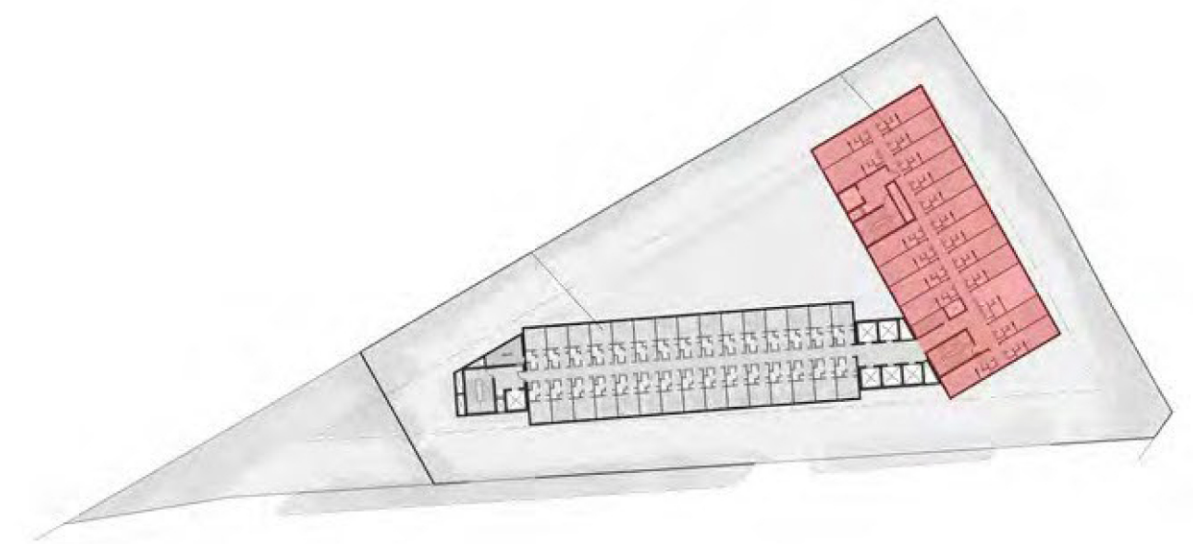
TYPICAL ROOM LAYOUT



LAYOUT A  
AREA = 16.25 SQM.

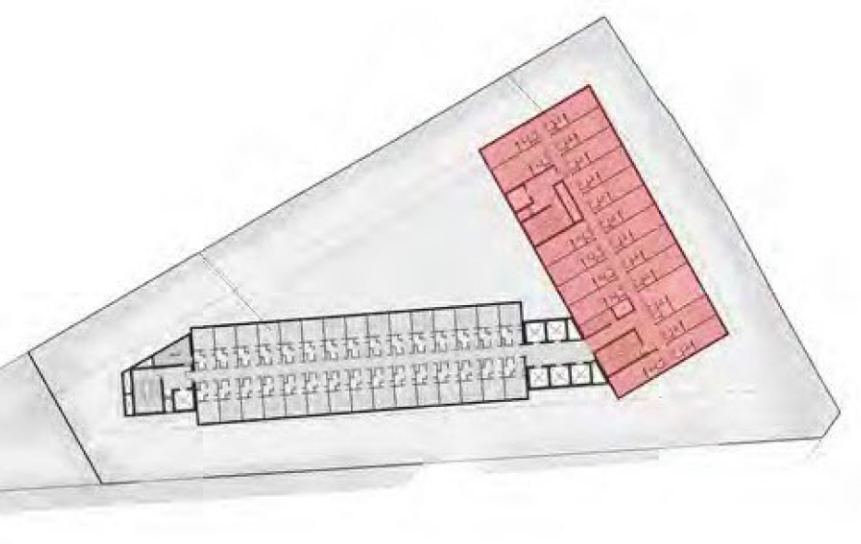


TYPICAL FLOOR PLAN  
EAST WING





# TYPICAL ROOM LAYOUT



LAYOUT B  
AREA = 22.80 SQM.



NORTH



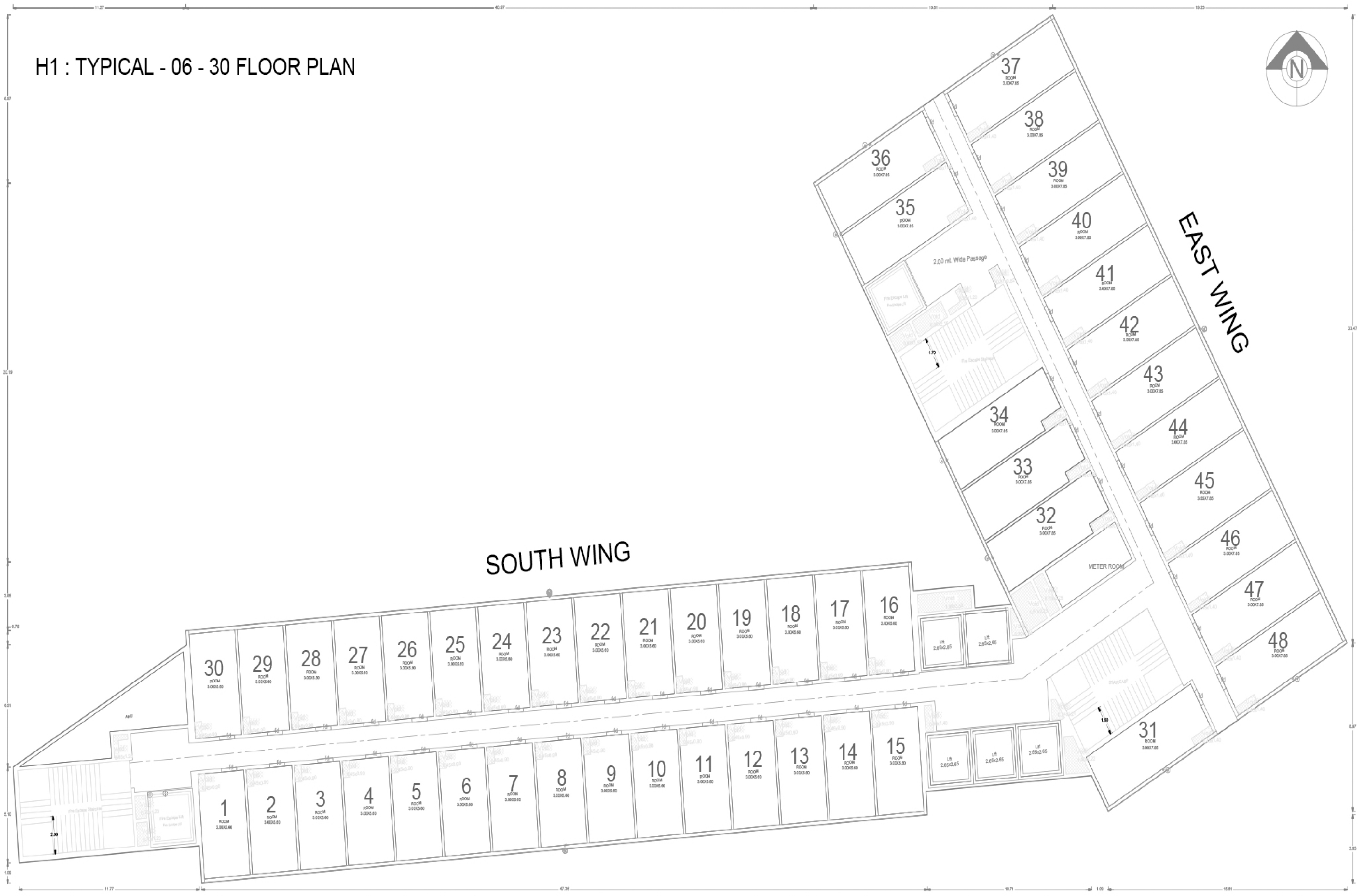
# H1 : TYPICAL - 06 - 30 FLOOR PLAN

WEST

EAST

## SOUTH WING

## EAST WING



TYPICAL - 6,7,8,10,11,12,13,15,16,17,19,20,21,22,24,25,26,27,29,30 FLOOR PLAN (SCALE=1:100)

SOUTH



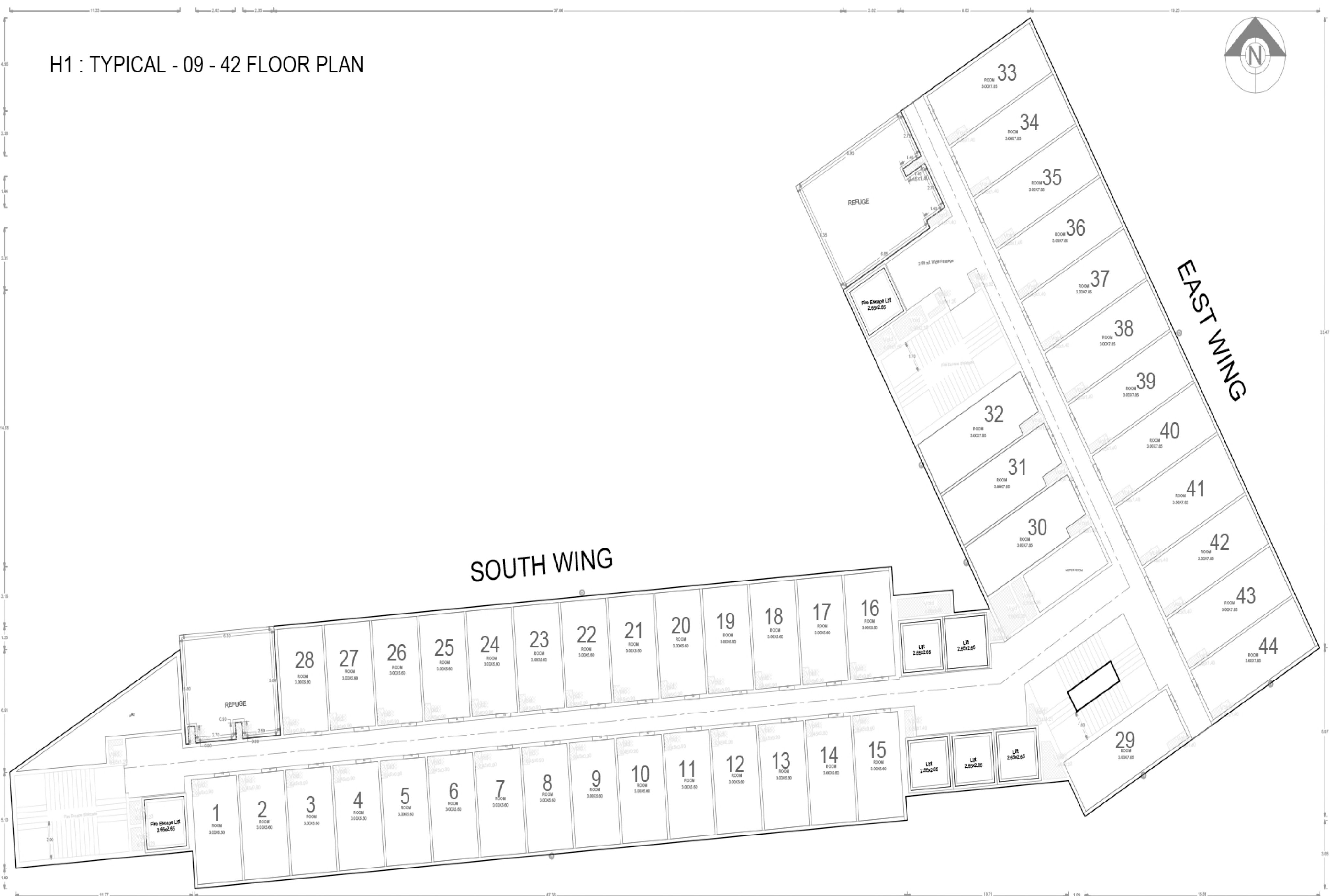
NORTH

H1 : TYPICAL - 09 - 42 FLOOR PLAN



WEST

EAST



SOUTH WING

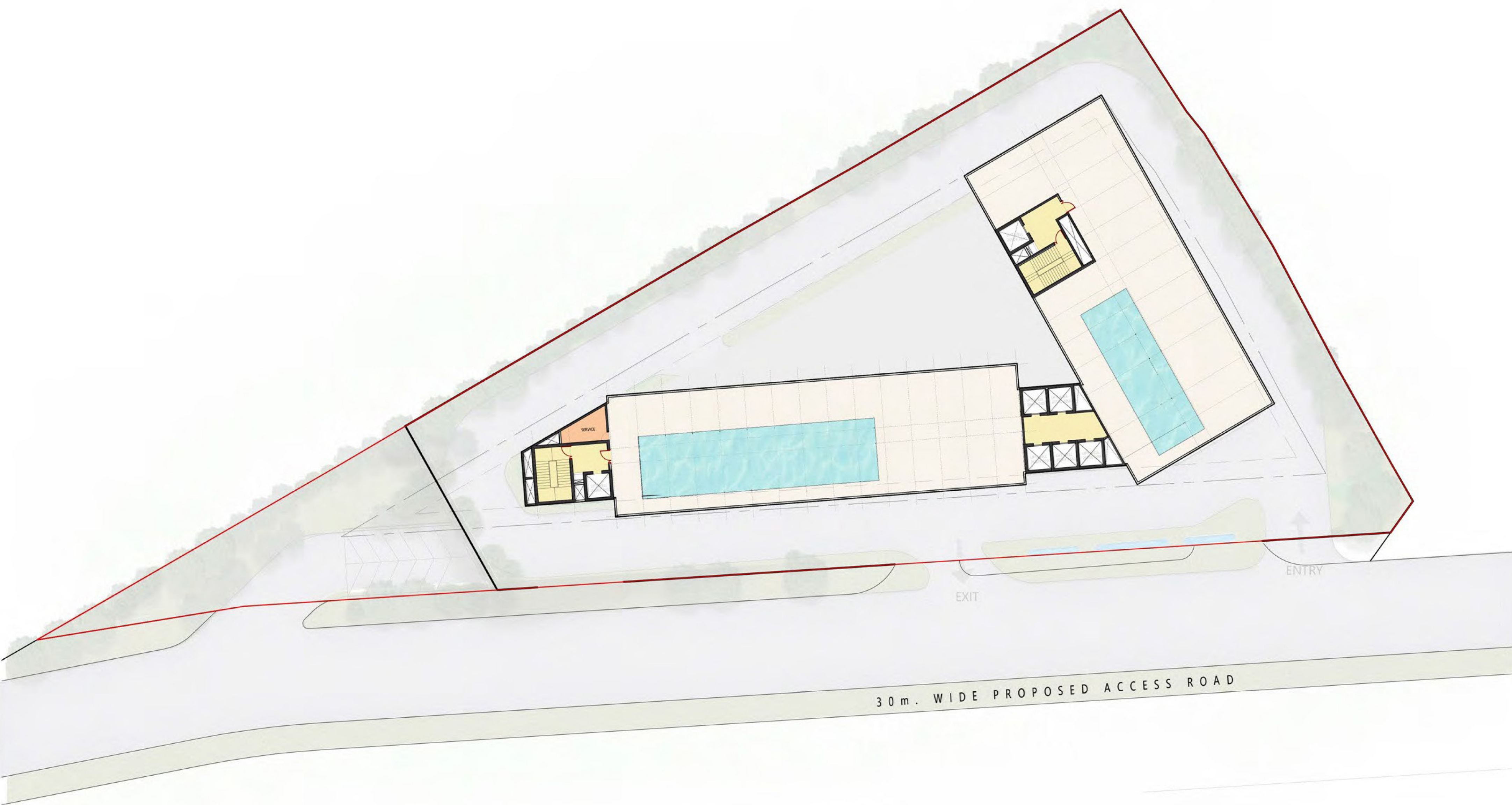
EAST WING

TYPICAL - 9,14,18,23,28,33,37,42 FLOOR PLAN (SCALE=1:100)

SOUTH

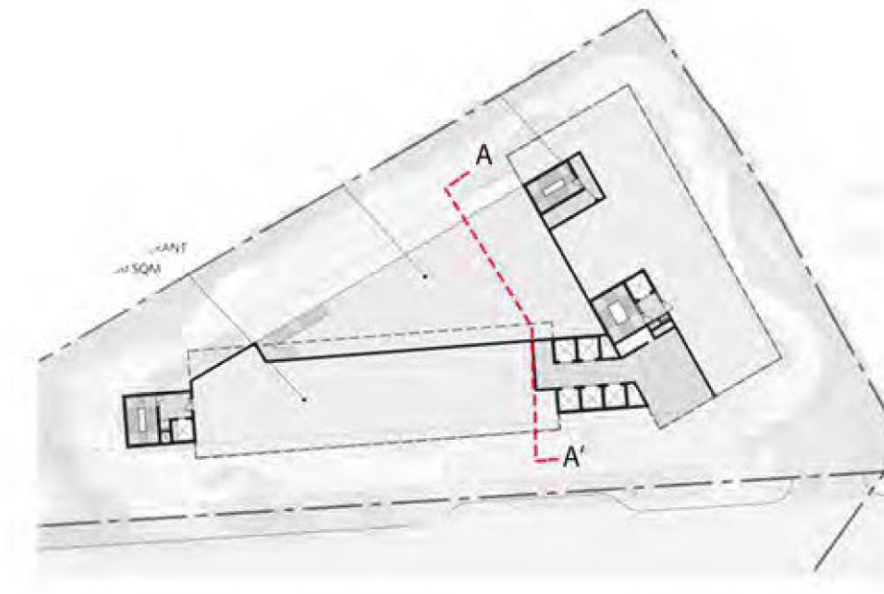
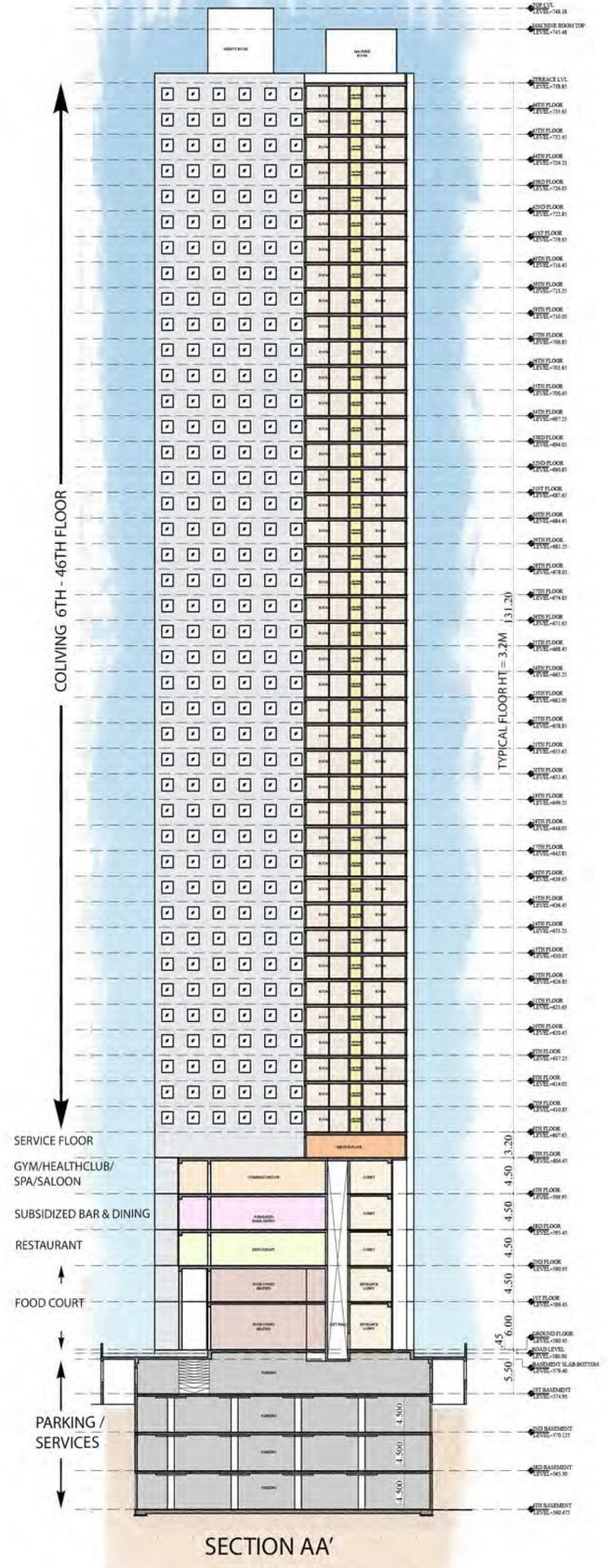


# TERRACE PLAN

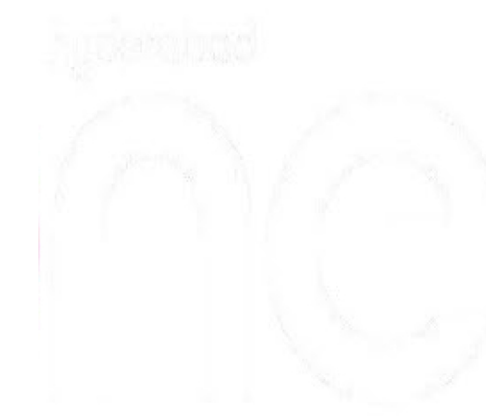




# SCHEMATIC SECTION







**Architect: Chapman Taylor**  
<https://www.chapmantaylor.com/>

**Structural:**  
**Strudcom** <http://strudcom.com/>

**MEP: Design Tree**  
<http://www.designtreeconsultants.com/clients.php>

**Chapman Taylor**

**Strudcom**

**Design Tree**



**Vertical Transportation Consultants :**

PVN Associates <https://www.pvnassociates.com/>

**Traffic Consultants : Third Rock**

<http://thirdrockindia.com/engineering-services/>

**IGBC : Godrej**

<https://www.godrejgreenbuilding.com/certService.aspx>

**Facade & Lightning Consultant : FCD India**

<https://www.fcdpl.com/>

**Landscaping & Common Areas Interiors Consultants:**

Chapman Taylor

**Signage Consultant : Hindustan Signages**

<http://www.hindustansignages.com/>

**Developer:**

Sensation <http://sensationcapital.com/>

**Development Advisor : Phoenix Group**

<https://www.phoenixindia.net/>

**PVN**

**Godrej**

**Third Rock**

**FCD**



**We are creating India's first, fully integrated, premium coliving facility  
where the global executive at all levels will feel at home.**



**SENSATION INFRACON PRIVATE LIMITED**

8-2-616/1, 4th floor, Saha Building, Road No.11,

Near Hotel Minerva Grand, Banjara Hills,

Hyderabad, Telangana - 500034.

[www.hyderabadone.in](http://www.hyderabadone.in) / [www.sensationinfracon.com](http://www.sensationinfracon.com)

